

Tone-Visual Nurse Call

The Tek-CARE®120 is a non-voice system that supports up to 120 master stations, 1280 station controllers and/or station controllers with 2-color dome lights, and 7680 stations. The station bus is 18AWG stranded pair or better, often allowing re-use of existing wire for retrofits.



touchscreen master station, wall and desk mount options



station controllers with & without dome light



customizable 2-button pull-cord stations



single room station



dual room station



duty station

2-Way Voice Communication Nurse Call

The Tek-CARE®160 is a modern and affordable nurse call system that is easy to install, use, and maintain. Featuring customizable peripheral devices, sleek, touchscreen master stations and high-quality two-way voice communication, the Tek-CARE160 is designed to meet the needs of facilities across the entire healthcare spectrum.



touchscreen master station, with optional handset kit

About Our TEP Program



TekTone® Elite Partners (TEPs) are distributors of TekTone® products who are authorized and trained to sell, install, and service the Tek-CARE®700

wander management system, the Tek-CARE®120 and Tek-CARE®160, and Tek-CARE®400 P5+ nurse call systems.

TEPs know the importance of system performance and reliability in the healthcare market and have factory-trained technicians to provide service and maintenance agreements 24 hours a day, 7 days a week.

This successful program allows a healthcare facility to work directly with a dedicated systems integrator within their region. This close partnership ensures that the facility's goals are being met by the most efficient means possible.

Your TekTone® Elite Partner:



SKILLED NURSING



AMBULATORY SURGERY CENTERS



CONTINUING CARE RETIREMENT COMMUNITIES / LIFE PLAN



ASSISTED / INDEPENDENT LIVING

TekTone®

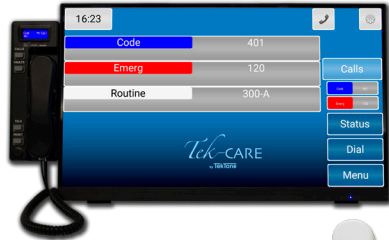
324 Industrial Park Road, Franklin, NC 28734
828.524.9967 • Toll-free: 800.327.8466
www.tektone.com • tektone@tektone.com



TekTone^{TEP}
elite
Partner
Product Portfolio

Audio-Visual Nurse Call

The Tek-CARE®400 P5+ is a facility-wide nurse/patient communications network with simplified wiring using CAT5 cable and plug-in connectors. Integrates with wireless telephone, real-time locating, and Admit, Discharge, Transfer systems.



Tek-CARE®
master station

master station with handset
and desk mount housing



patient station,
single or dual
DIN jacks



vandal-resistant/
psychiatric staff station



call cords &
pillow speakers



customizable
2-button pull-cord
station



wireless
phone
(system by others)

corridor
dome light



Wander Management

The Tek-CARE®700 wander management system gives Alzheimer's, dementia and other at-risk residents the ability to move freely about a facility, while preventing them from leaving or wandering into dangerous areas. Tek-CARE®700 runs on our Tek-CARE® Appliance Server, and provides resident ID, loiter and door-ajar monitoring, low tag battery and other alerts.



Tek-CARE®700 event
monitor (runs on
Tek-CARE®
Appliance Server)



door
controller



resident tag
and asset tag



wander
wearables tag



outdoor
keypad



keypad
with display

TekTone® System Integration

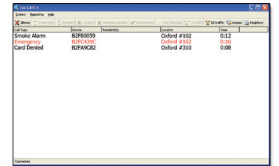
Our proprietary Tek-CARE® Appliance Server connects to all our nurse call, wander management, alert integration, and wireless nurse call/emergency call systems. The Tek-CARE® Appliance Server displays the calls, events and messages from all connected systems at once. Any computer networked with it can create customizable reports on all activity, and up to 255 networked PCs can view all system events as they occur.

Alert Integration

The Tek-ALERT® alert integration manager allows a facility to integrate calls and activities from hard-wired nurse call, wireless nurse/emergency call, fire alarm, security and access control systems, and route those calls to the appropriate caregiver.



Any networked computer utilizing the LS623 event monitor software can display calls and generate activity reports.



Tek-CARE®
Appliance
Server

Smart phones, pagers and email can easily be included to ensure that the right staff member receives the right event notification at the right time.



Tek-CARE® Staff App

Display calls on the go! The Tek-CARE® Staff App runs on up to 255 iOS or Android devices. The Tek-CARE® TV for Apple TV can run on up to 255 TVs. (See www.tektone.com for the latest version information.) Each device displays all in its assigned zones—from all connected systems at once.

